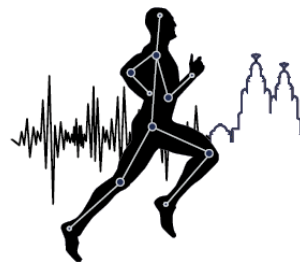


40th International Society of Biomechanics in  
Sports Conference

Exhibitor & Sponsor  
Prospectus



**ISBS 2022**

LIVERPOOL, UK

19-23 JULY



## What is the ISBS?

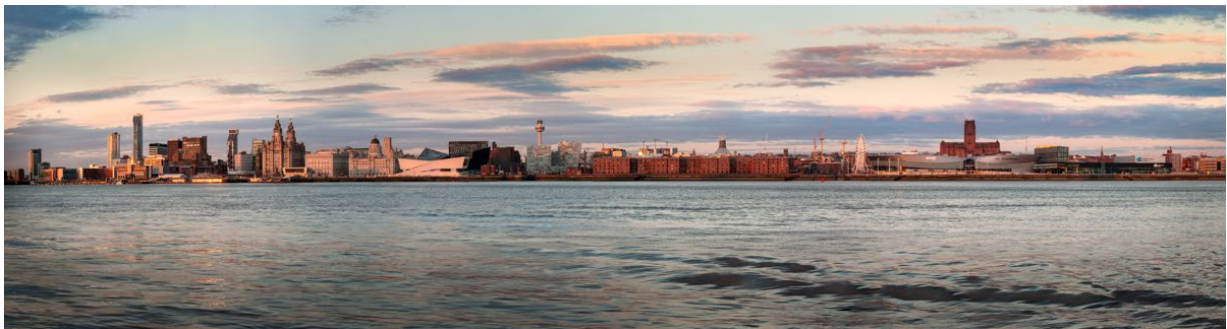
The ISBS is an international society totally dedicated to biomechanics in sports. The International Society of Biomechanics in Sports is composed of members from all over the world with a common desire to study and understand how human movement, sports equipment and technology relate to applied sports biomechanics.

## What is the ISBS conference?

ISBS conferences are a global leader in the field of biomechanics. It is hosted annually and in 2020 it visits Liverpool, UK. Participants come from a wide range of backgrounds including sport and exercise science, education, engineering, applied sports, computer science, elite sport support, rehabilitation and medicine.

Conferences are conducted in a friendly atmosphere, which favours and encourages wide participation.

The quality of research presented and materials produced are at the cutting edge of knowledge and technology. In addition to oral and poster research presentations select sport science topics are covered in depth each year through special sessions and lectures. In addition, a special feature includes the **Geoffrey H.G. Dyson lecture** presented by an outstanding scientist in sports biomechanics. A number of other awards and recognitions are given each year including the **New Investigator Award**.



## Why exhibit or sponsor at ISBS 2022?

- Position your company as a global leader in biomechanics
- ISBS 2022 is one of the largest global biomechanics conferences of the year
- Our venue puts exhibitors at the heart of the conference giving access to delegates from across the world.
- Attendees from across the globe in one location for 5 days.
- Opportunities to contribute to the scientific programme.

## ISBS 2022 Venues

Redmonds Building, Liverpool, L3 5UG

Student Life Building (Exhibitor Location), Liverpool, L3 5GE

Liverpool John Moores University is based in the city centre of Liverpool, 5-10 minutes walk from Lime St Station, 15 minutes from the main shopping area, and 20 minutes walk to the Albert Dock. Exhibitors will be based on the second floor of the brand new Student Life Building. Liverpool's has a world famous waterfront, and is one of the most vibrant and developing cities in Europe. Liverpool has a rich blend of history, culture, heritage, a vibrancy and character you won't find anywhere else. Renaissance is in full swing and delegates will be blown away by the culture and magic of this amazing destination. The city centre is compact and easy to navigate – you can walk across it in 20 minutes!



LJMU Student Life Building

**CITY CENTRE LOCATION** – Liverpool John Moores University is located in Liverpool city centre. The central location means that all local amenities (Lime Street Station, restaurants, cafes, shopping and tourist attractions) are within walking distance.

**EXHIBITOR AREA** – Exhibitors are at the heart of this conference in the *Student Life Building* with a large open exhibition space where refreshments will be served. This will create excellent networking opportunities. A 345 m<sup>2</sup> space will host exhibitors, refreshments, social space and lunches. The scientific programme will take place in both the Student Life Building and the Redmonds building. A detailed exhibition plan is provided below.



## Exhibition Packages

We have planned an exhibition space that coincides with food and social space that will allow you to maximise your time with the delegates. **Stand positions are based on first come basis so book early.**

*\*\*Note that VAT @ 20% will be applied to all booked items.*

<i>Space Size</i>	<i>Staff Passes Included</i>	<i>Standard Rate**</i>
<b>2m x 2m</b>	<b>2</b>	<b>£ 1600</b> (£1820 inc VAT)

Exhibition packages include:

- Two plug sockets.
- One table (1.4 x 0.7 m) and two chairs
- Two full conference registrations
- Two conference banquet tickets
- Company logo in the congress programme
- Company logo on the congress website with hyperlink to exhibitor's corporate website (please supply).
- LJMU Guest WiFi

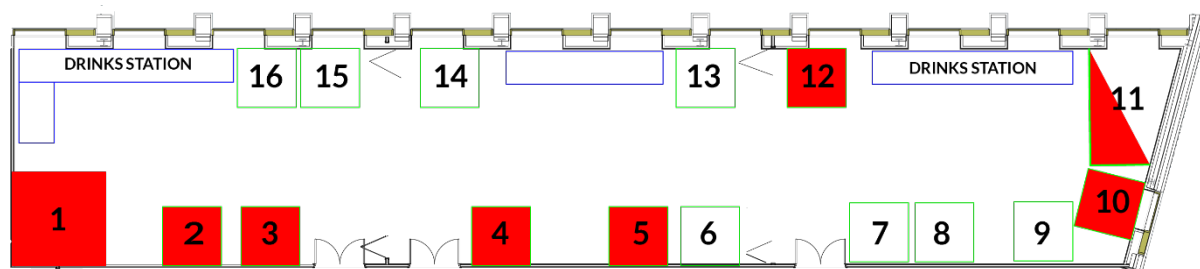
Notes: Exhibitors should supply any additional extension leads.

## Loading/Unloading

There is a rear car park where loading and unloading can take place. There is a chargeable multi-storey car park close by for exhibitors to carry items into the venue if they so wish.

Shipping to the venue is only possible on Tuesday 19<sup>th</sup> July. If you wish to ship items in advance, please discuss with the organisers for possible delivery to the university.

## Exhibition Indicative Floor Plan



Plan correct as of 2022-02-15

## Exhibition Hours and Set up

Tuesday 19 <sup>th</sup> July	Exhibitors	from 10:00*
* The exhibition will not be allowed to open until all stands are fully built and the area assessed for compliance with current Health and Safety regulations.		
Wednesday 20 <sup>nd</sup> July	Exhibition	from 08:00 – 20:00
Thursday 21 <sup>st</sup> July	Exhibition	from 08:00 – 20:00
Friday 22 <sup>nd</sup> July	Exhibition	from 08:00 – 14:00 (then social programme)

Exhibition removal can take place after lunch on Friday 22<sup>nd</sup> July.

# Sponsorship Opportunities

*Note that VAT @ 20% will be applied to all booked items.*

## Platinum Sponsorship (SOLD)

**£9995**

- Premium exhibition stand (either #1 or #11)
- Keynote video promotion or presentation (up to 2 minutes): A video or presentation promoting your company / product / technology that will be played ahead of a keynote lecture.
- Four full congress registration passes
- Either exclusive Congress Lanyard Sponsorship or Conference App sponsorship
- Your logo on the congress staff t-shirts (one colour print process)
- Your logo included on the cover of the congress programme booklet
- Your logo on the congress website homepage
- Full page colour advertisement in the printed congress programme booklet
- Your logo used on all congress digital signage and printed signage as a major sponsor

## Gold Sponsor (limited opportunities)

**£5000**

- Double-sized exhibition stand up to 4m x 2m (availability dependent – book early)
- Three full congress registration passes
- Your logo included on the cover of the printed congress programme booklet
- Your logo on the congress website homepage
- Half-page colour advertisement in the congress programme booklet
- Your logo used on all congress digital signage and printed signage as a gold sponsor

## Other Sponsorship Opportunities

Note that VAT will be applied to all booked items for UK companies where relevant. Current rate is 20% UK VAT.

### SOCIAL EVENTS

#### Welcome Reception

£2000 exc. VAT

Your organisations details listed as sponsor of the Welcome Reception on Tuesday evening. We will work with you to create brand awareness at the event.

#### Conference Social Activity

£2000 exc. VAT

We will work with you to discuss the type of event to sponsor e.g. a trip for delegates on the Liverpool wheel. We will work with you to create brand awareness at the event.

#### Student Night

£2000 exc. VAT

Your organisation has exclusive sponsorship of event and listed as sponsor of this evening event. We will work with you to create brand awareness at the event.

#### Conference Banquet

£3000 exc. VAT

Your organisation has exclusive sponsorship of the Congress Party. Your promotional materials are displayed throughout the venue. We will work with you to create brand awareness at the event

### CATERING

#### Lunch Sponsor

£1000 exc. VAT

There are 4 days available to choose from, with one included in the price. Your logo will be displayed on the programme and Lunchtime signage

### VIDEO

#### Pre-keynote Video / Presentation

£1500 exc. VAT

A short video promoting your company / product / technology that will be played ahead of a keynote lecture. There are a maximum of 4 opportunities.

Please feel free to get in touch if there are other sponsorship opportunities you may wish to take up.

## Booking

1. Please review the booking terms and conditions
2. Log on to <https://www.isbs2022.org/exhibit.html> to download the editable version of the booking form
3. Email your completed form to [isbs2020@ljmu.ac.uk](mailto:isbs2020@ljmu.ac.uk) . Ensure you email a high resolution image of your organisations logo and relevant web address for marketing.
4. On receipt of the completed form, you will be emailed an invoice for payment.
5. Please ensure payment is completed according to your booking terms which will be advised on receipt of your completed form.

## Contact details & enquiries

Contact the conference organisers Dr Mark Lake and Dr Mark Robinson, Liverpool John Moores University at [isbs2020@ljmu.ac.uk](mailto:isbs2020@ljmu.ac.uk).

## Terms & Conditions

### Cancelled/Postponement & Payments

50% of the total amount is due immediately as a deposit for all bookings. Balance of payments must be received 4 months prior to the congress – 19 March 2022. All invoices must be paid within 30 days of the invoice date. Bank details will be provided on all invoices. All bank charges are the responsibility of the sender. If the Client fails to submit full payment 3 months prior to the event, we reserve the right to cancel the Client's participation in the Exhibition with no refund of monies received.

Should an Exhibitor/Sponsor wish to cancel any of its participation (sponsorship, exhibition space), written notification must be sent to [isbs2020@ljmu.ac.uk](mailto:isbs2020@ljmu.ac.uk) .

Refunds will be based on the following schedule:

Before 19 April 2022 – 95% monies received will be refunded

After 19 April 2022 – 80% of monies received will be refunded

In the event that the conference is postponed, cancelled or changed to a virtual meeting the organisers will refund the exhibition/sponsorship/advertising money to the relevant company, minus any benefits that have been received by the company prior to the cancellation and any expenses incurred by the organisers with respect to the provision of the agreed benefits. This would be equivalent to a 95% refund of monies paid.

### Stand Assignment, Exhibition Construction & Staff

Exhibition booths will be allocated strictly on a first come, first served basis and will be confirmed in writing with your booking invoice. Preferences and priorities requested by the Exhibitor/Sponsor as to booth space location will be respected whenever possible. The organisers however reserves the right to make reasonable transfers as to the location of the Exhibitor/Sponsor's booth should any circumstances arise where it is deemed necessary. No transfers will be made without prior notice to the Exhibitor/Sponsor. Any changes in booth locations do not entitle the Exhibitor/Sponsor to cancel the exhibition space or obtain monetary compensation.

The organisers reserve the right to alter the layout of the exhibition area and to remove sections of the space and features such as posters, catering where or as required.

Exhibitors agree to be present the full duration of the exhibition during the congress. Set up and dismantling of any stands must only occur during the specific allotted timings. Exhibitors are entitled to the number of staff passes indicated in their exhibition package.

### Insurance and Safety

The organisers cannot be held responsible for any loss of damage of/to any equipment brought in for the exhibition stand. The Exhibitor/Sponsor is therefore advised to ensure to take out adequate insurance cover as necessary including Employers Liability & Public Liability cover, insurance to cover loss of damage to exhibits or other personal property. In addition the Exhibitor/Sponsor is required to show proof of their insurance liability in the event of damage to the venue. If an exhibitor fails to comply with the rules and regulations of Liverpool John Moores University the organisers reserve the right to reclaim its exhibition space and resell it, and all monies paid by the exhibitor shall be forfeited.